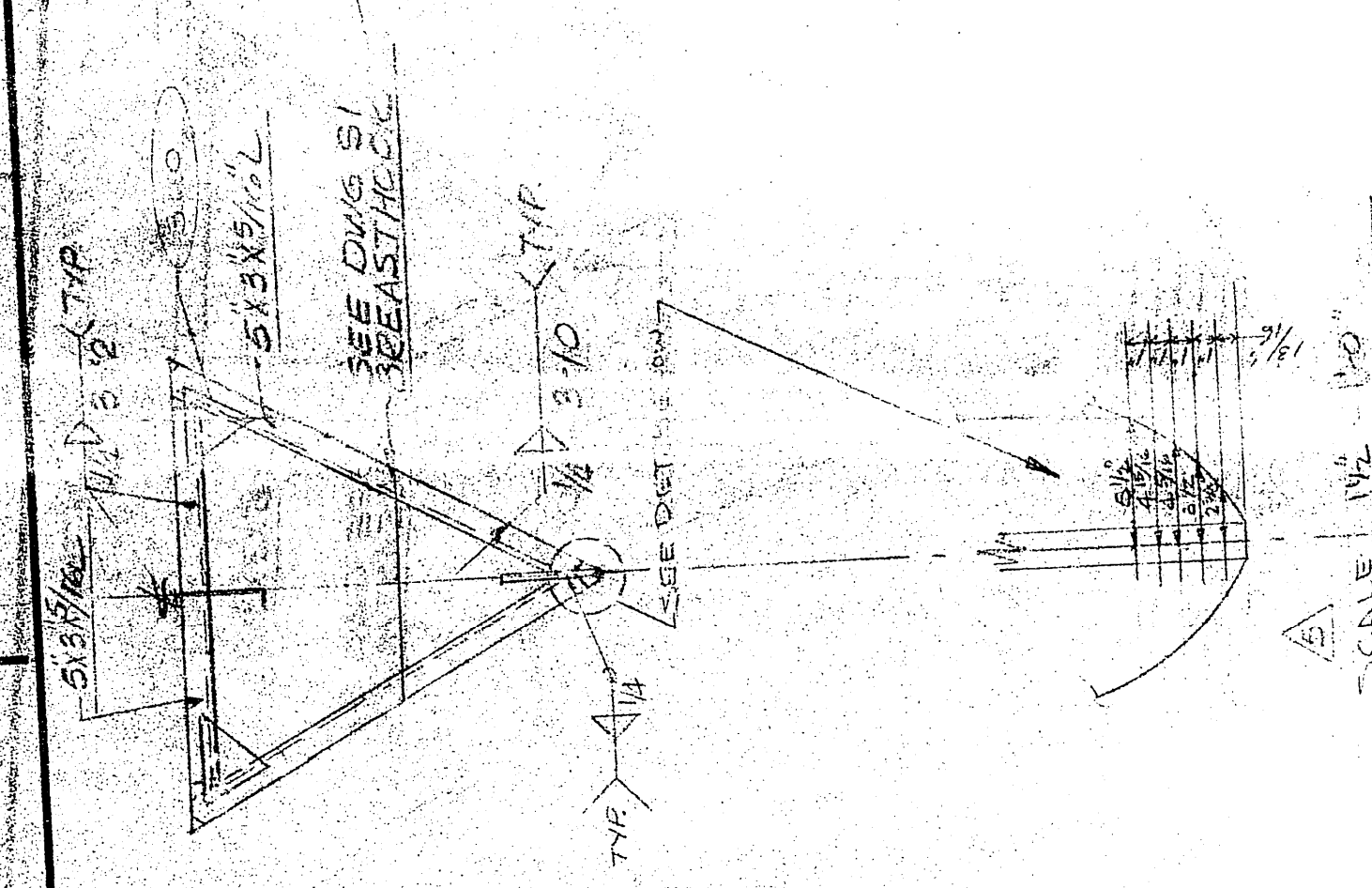
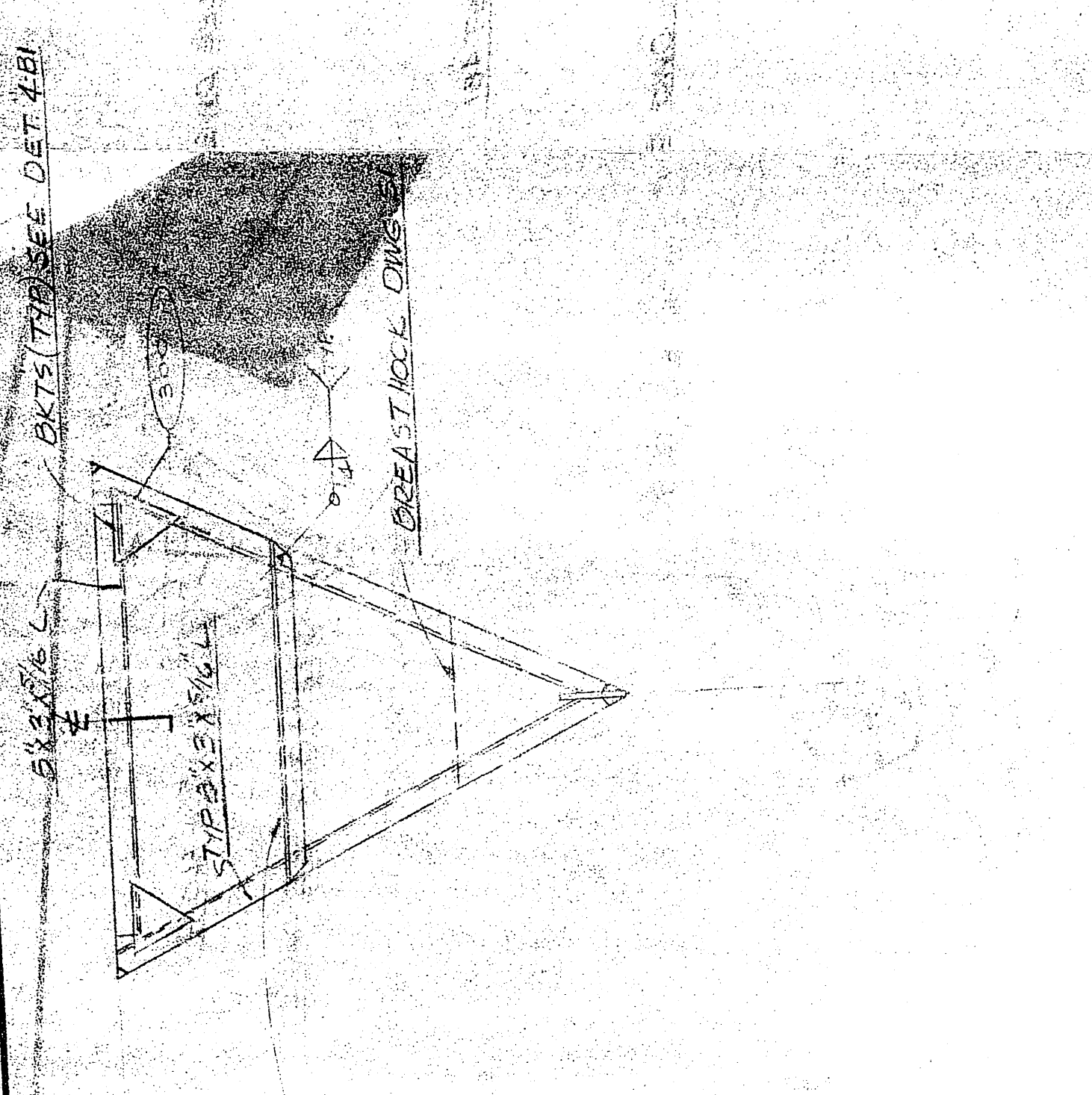


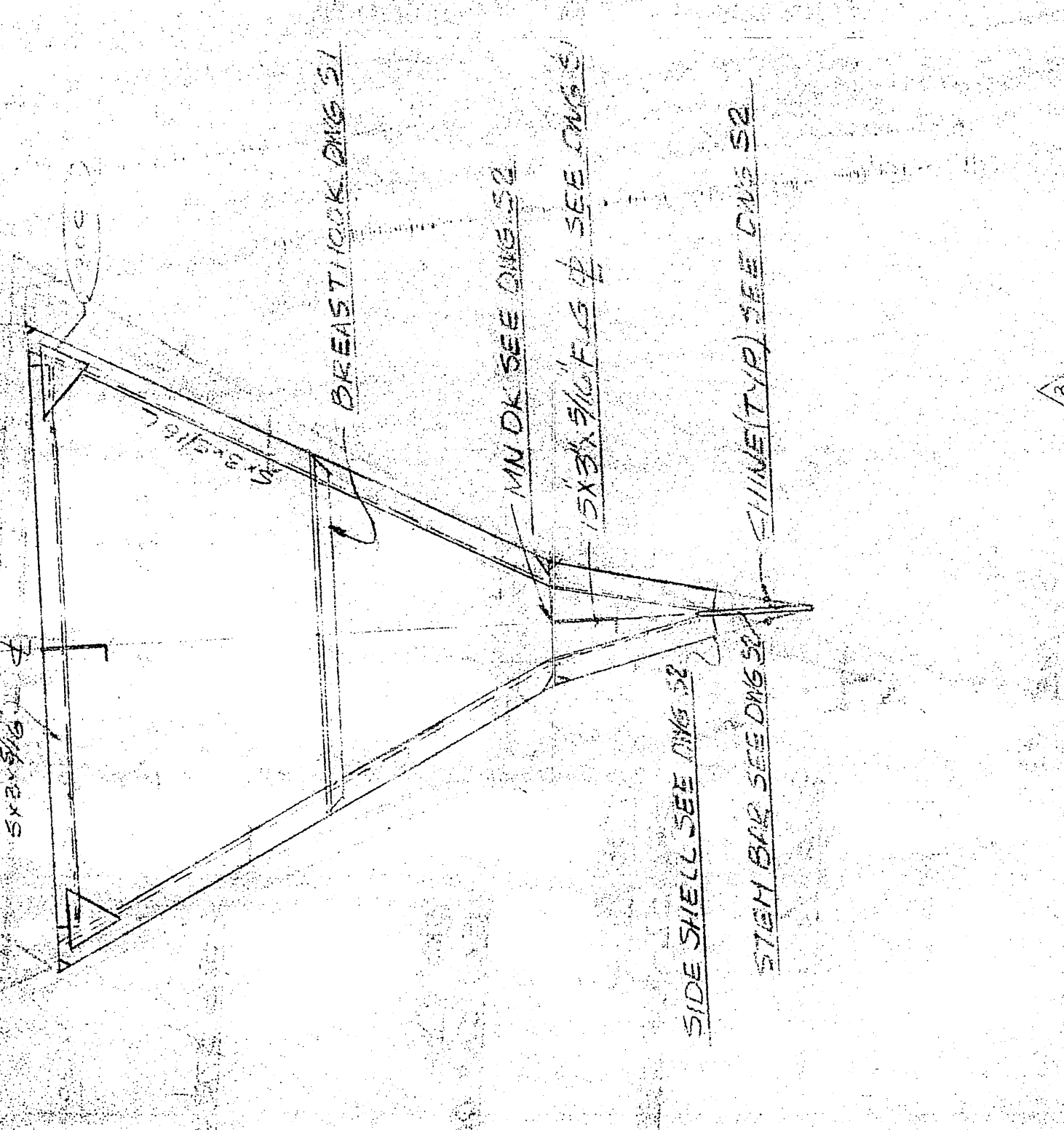
FRAME #1
SCALE: 1/4" = 1'-0"



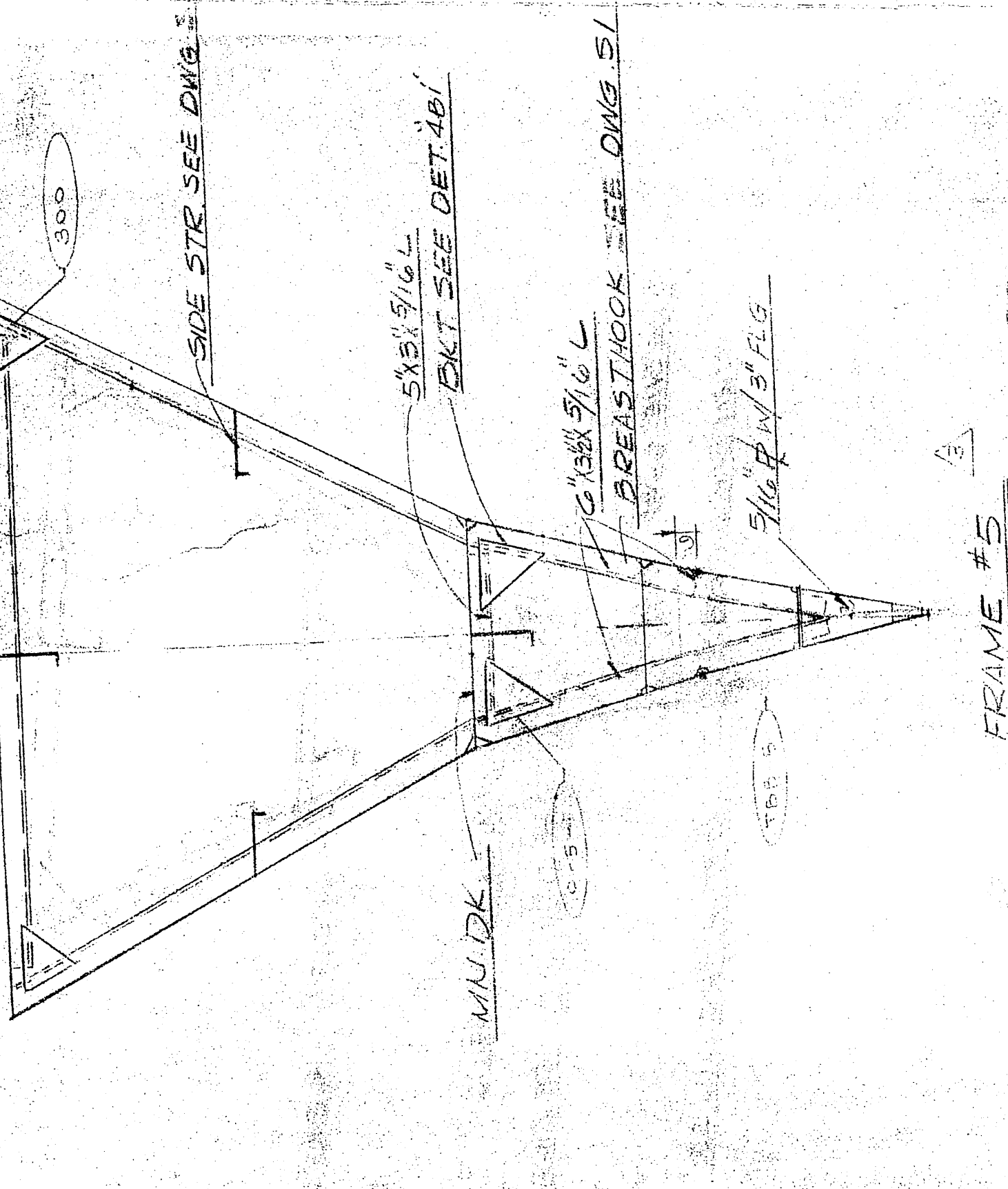
FRAME #2
SCALE: 1/4" = 1'-0"



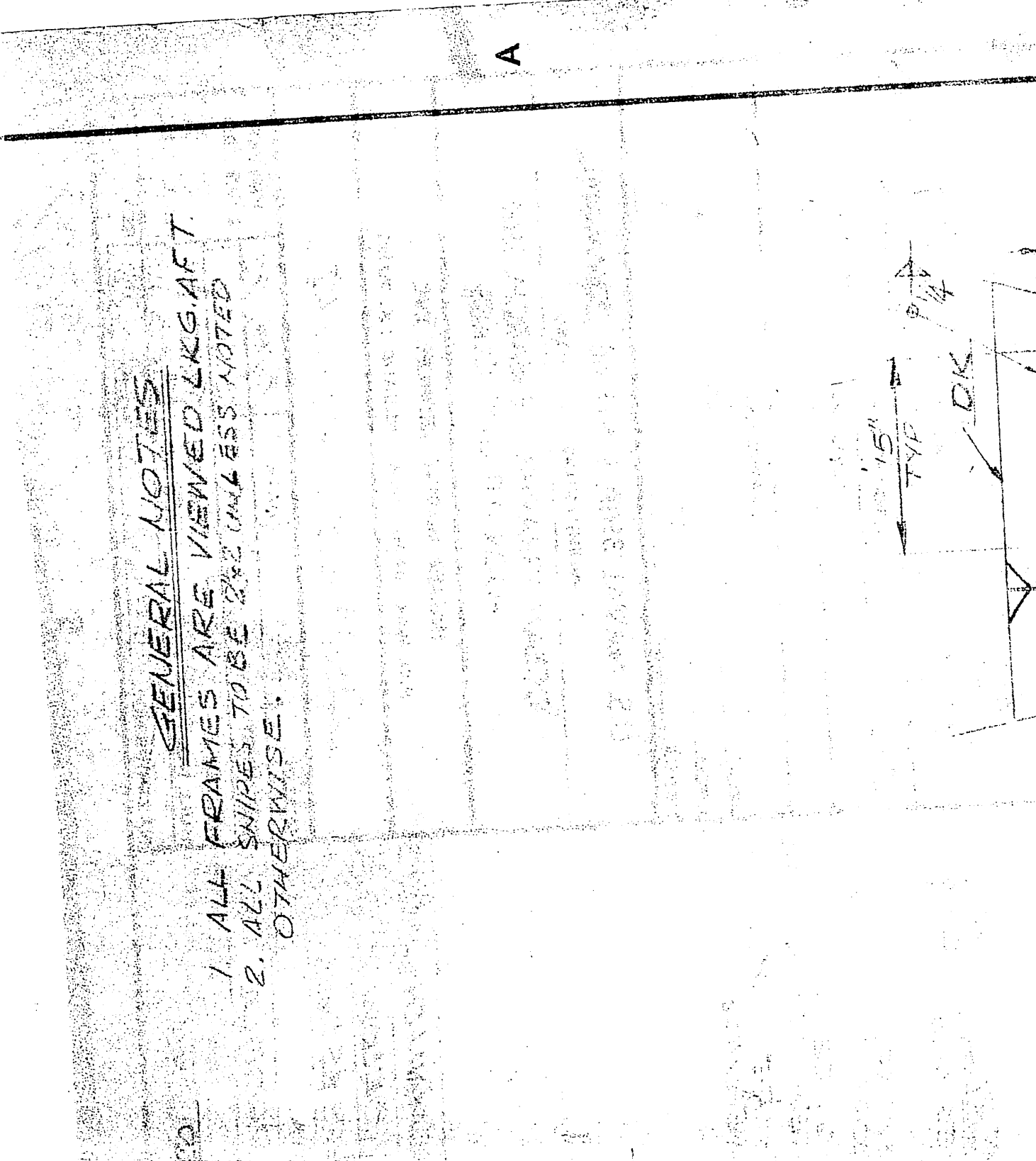
FRAME #3



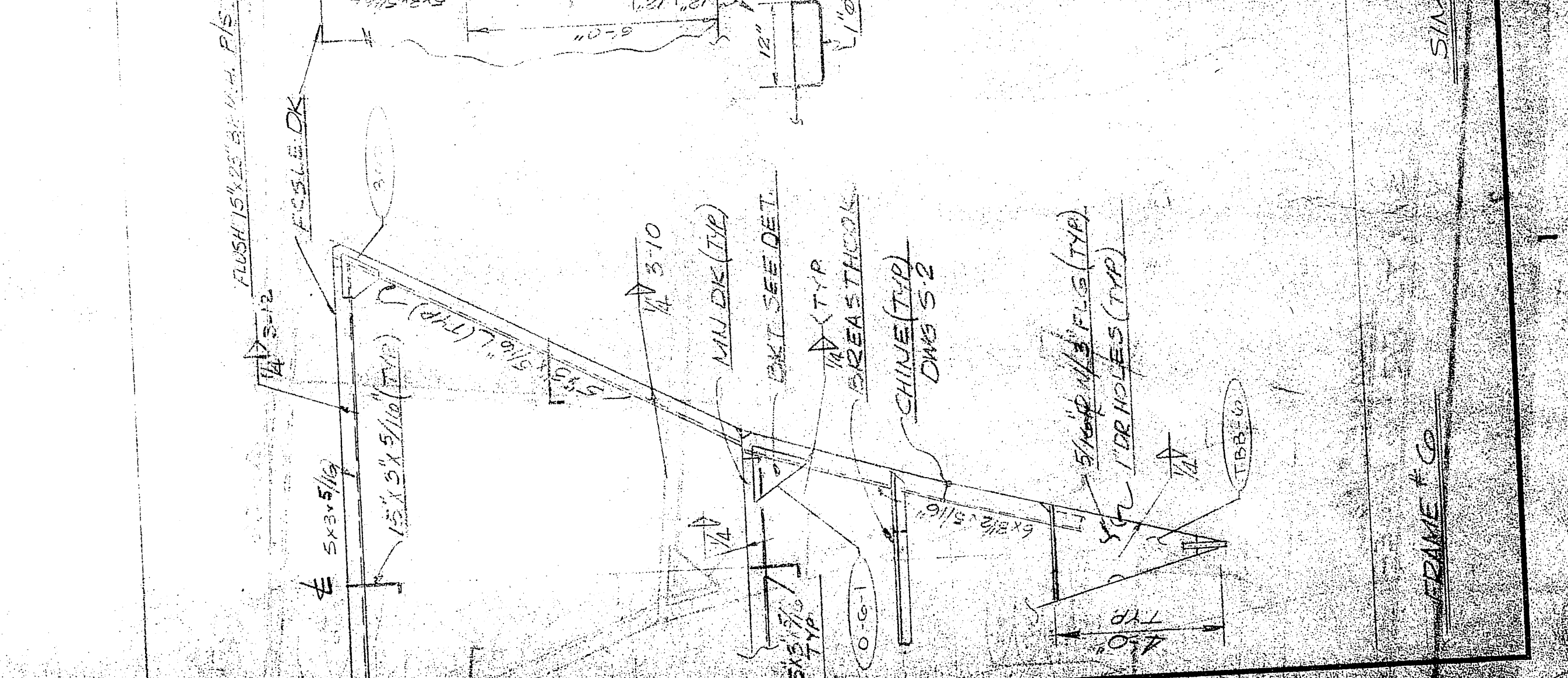
FRAME #4



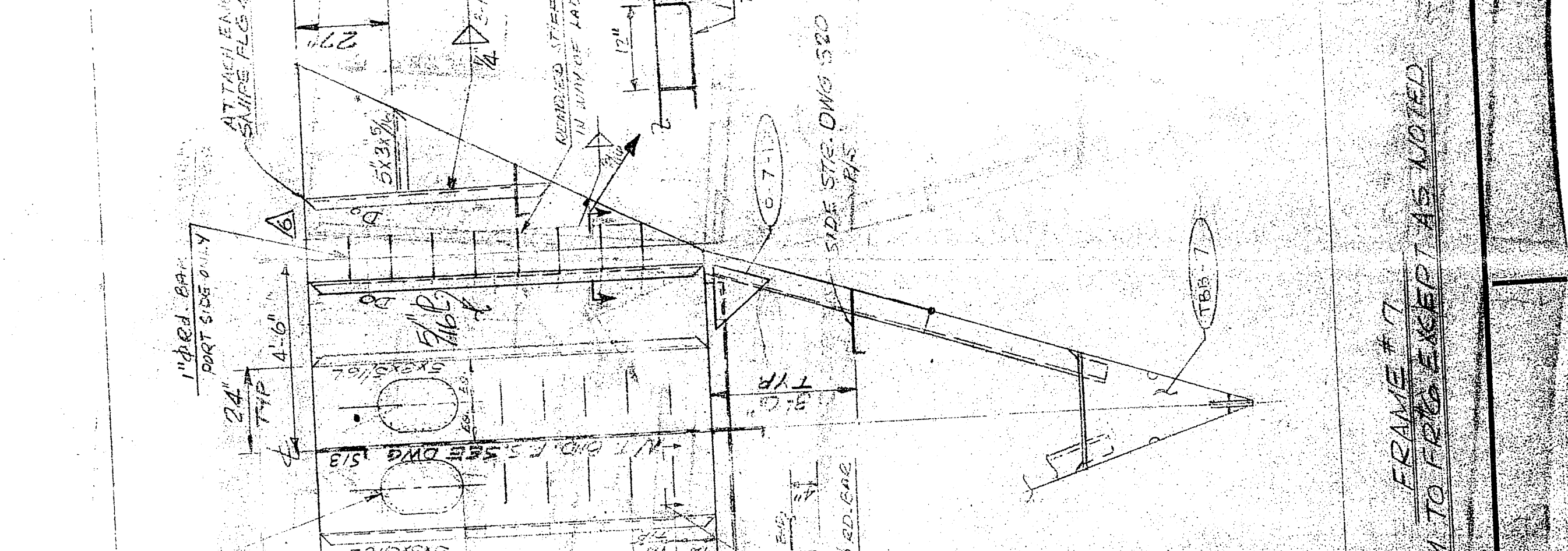
FRAME #5
SIM TO FR 4 EXCEPT AS NOTED



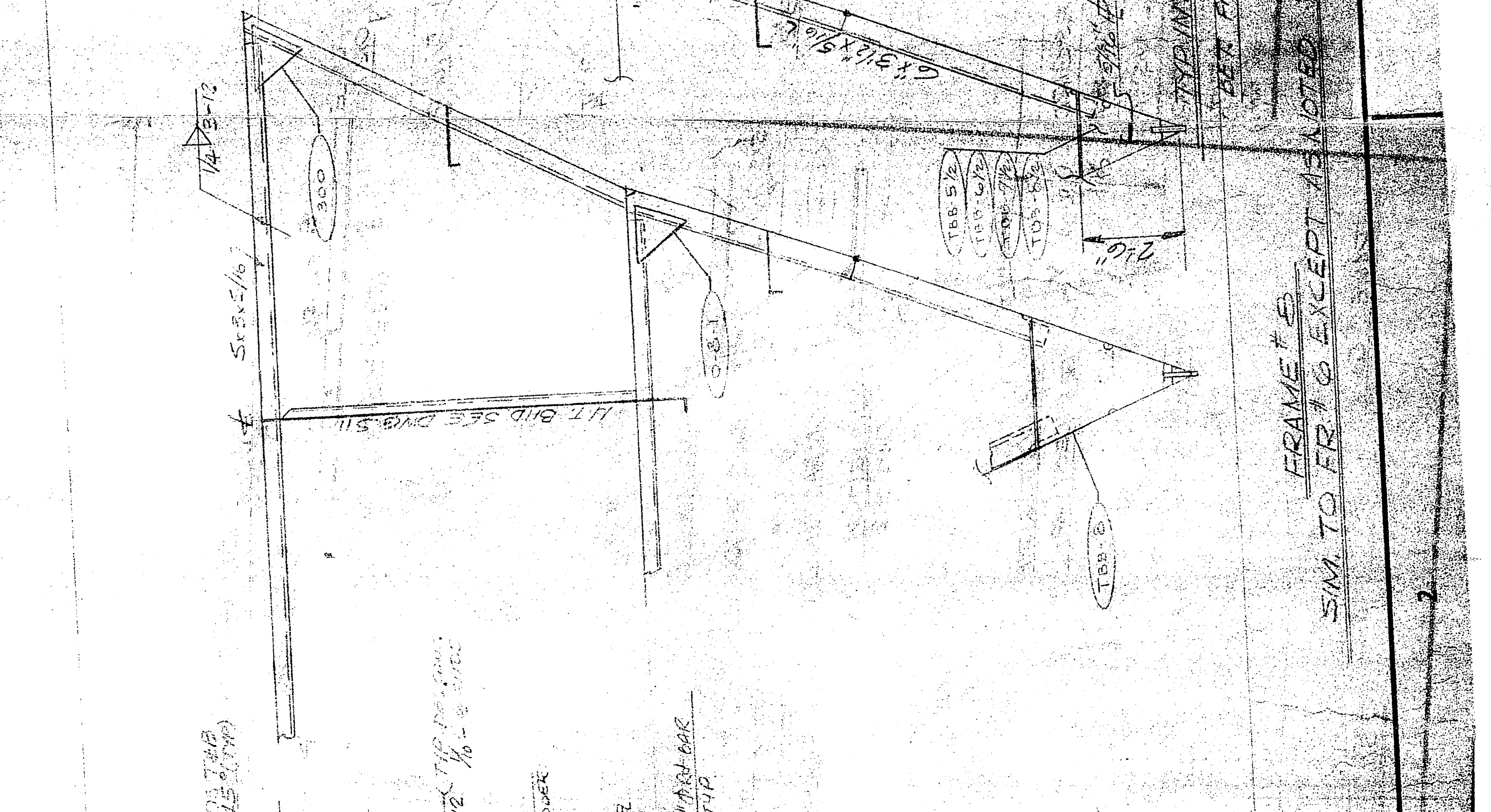
FRAME #6
SIM TO FR 5 EXCEPT AS NOTED



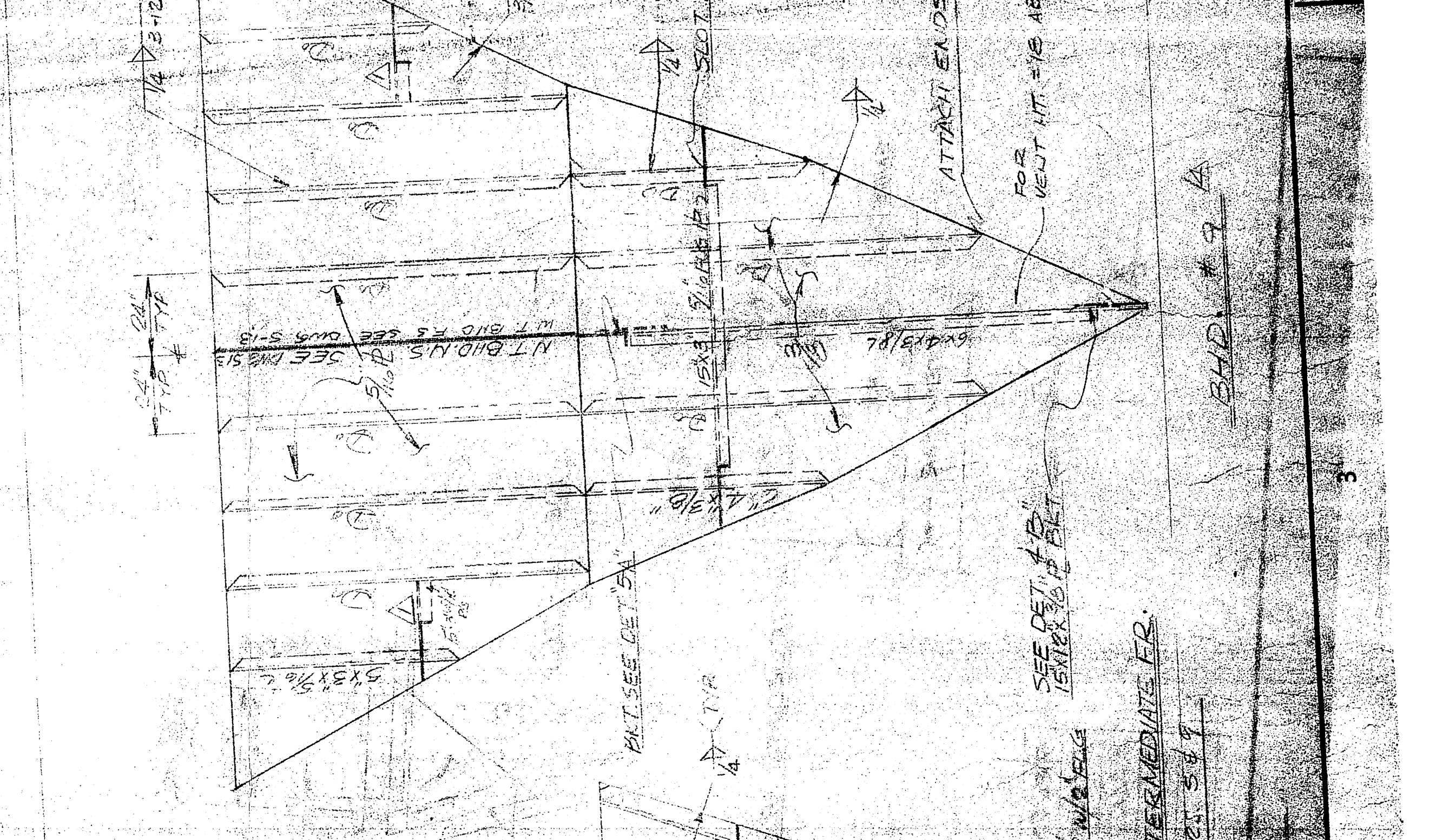
FRAME #7
SIM TO FR 6 EXCEPT AS NOTED



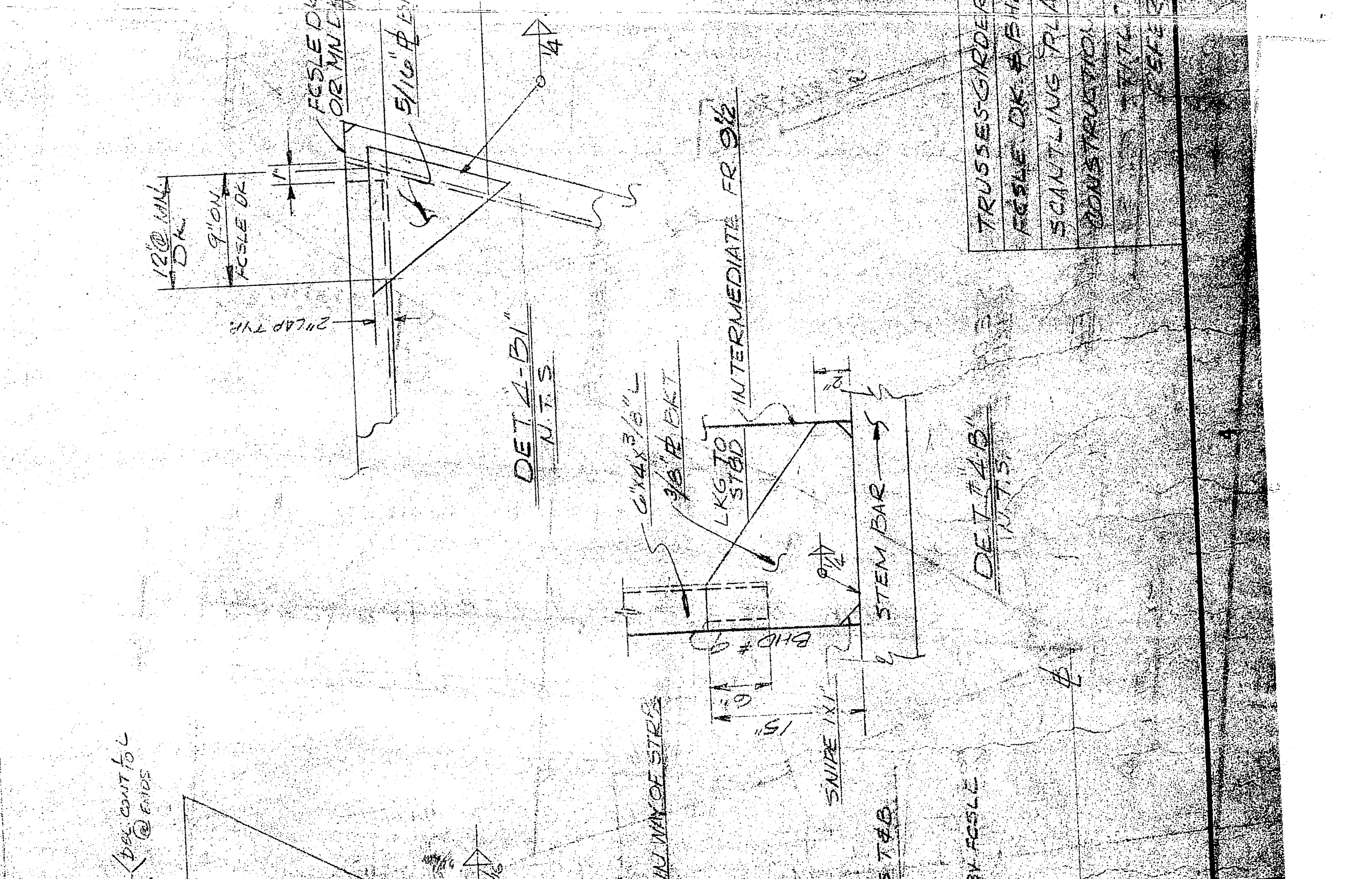
FRAME #8
SIM TO FR 7 EXCEPT AS NOTED



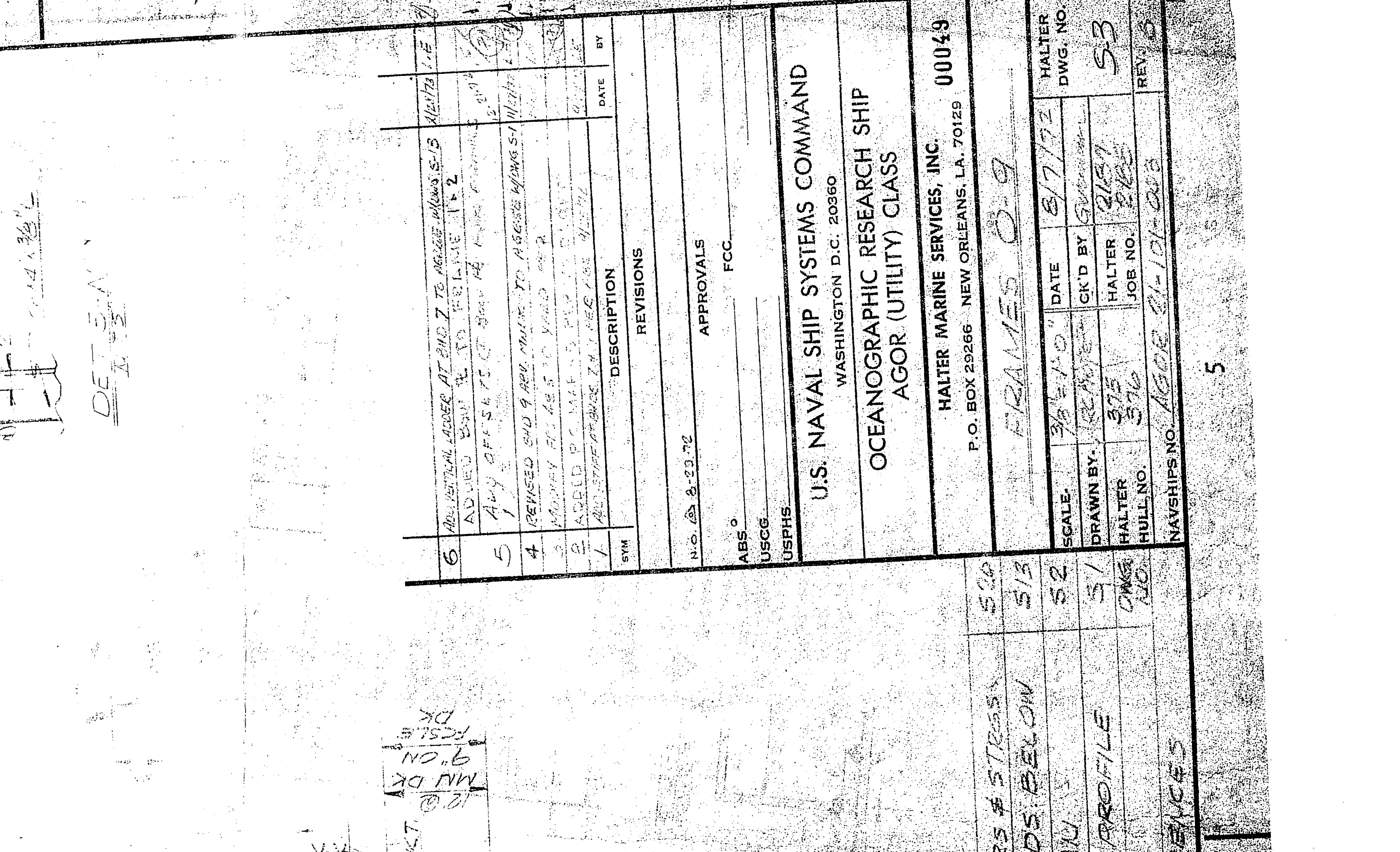
FRAME #9
SIM TO FR 8 EXCEPT AS NOTED



FRAME #10
SIM TO FR 9 EXCEPT AS NOTED



FRAME #11
SIM TO FR 10 EXCEPT AS NOTED



FRAME #12
SIM TO FR 11 EXCEPT AS NOTED

GENERAL NOTES
1. ALL FRAMES ARE VIEWED LOOKING AFT
2. ALL SHIPMENTS TO BE AS UNLESS NOTED
OTHERWISE.

SCALE: 1/4" = 1'-0"

DATE: 8/7/72
DRAWN BY: [Signature]
CHECKED BY: [Signature]

U.S. NAVAL SHIP SYSTEMS COMMAND
OCEANOGRAPHIC RESEARCH SHIP
AGOR (UTILITY) CLASS

HALTER MARINE SERVICES, INC.
P.O. BOX 28246 NEW ORLEANS, LA. 70128
00043

SCALE: 3/8" = 1'-0"
DATE: 8/7/72
DRAWN BY: [Signature]
CHECKED BY: [Signature]

U.S. NAVAL SHIP SYSTEMS COMMAND
OCEANOGRAPHIC RESEARCH SHIP
AGOR (UTILITY) CLASS

HALTER MARINE SERVICES, INC.
P.O. BOX 28246 NEW ORLEANS, LA. 70128
00043

SCALE: 3/8" = 1'-0"
DATE: 8/7/72
DRAWN BY: [Signature]
CHECKED BY: [Signature]

U.S. NAVAL SHIP SYSTEMS COMMAND
OCEANOGRAPHIC RESEARCH SHIP
AGOR (UTILITY) CLASS

HALTER MARINE SERVICES, INC.
P.O. BOX 28246 NEW ORLEANS, LA. 70128
00043

NO.	DATE	DESCRIPTION	APPROVED	DATE
6	8/7/72	ADDITIONAL WORK AT END 7 TO INCLUDE MAIN DECK STIFFENERS	[Signature]	8/7/72
5	8/7/72	ADDITIONAL WORK AT END 7 TO INCLUDE MAIN DECK STIFFENERS	[Signature]	8/7/72
4	8/7/72	REVISIONS TO END 7 TO INCLUDE MAIN DECK STIFFENERS	[Signature]	8/7/72
3	8/7/72	ADDITIONAL WORK AT END 7 TO INCLUDE MAIN DECK STIFFENERS	[Signature]	8/7/72
2	8/7/72	ADDITIONAL WORK AT END 7 TO INCLUDE MAIN DECK STIFFENERS	[Signature]	8/7/72
1	8/7/72	ADDITIONAL WORK AT END 7 TO INCLUDE MAIN DECK STIFFENERS	[Signature]	8/7/72

U.S. NAVAL SHIP SYSTEMS COMMAND
OCEANOGRAPHIC RESEARCH SHIP
AGOR (UTILITY) CLASS
WASHINGTON D.C. 20380

HALTER MARINE SERVICES, INC.
P.O. BOX 28246 NEW ORLEANS, LA. 70128
00043

SCALE: 3/8" = 1'-0"
DATE: 8/7/72
DRAWN BY: [Signature]
CHECKED BY: [Signature]

U.S. NAVAL SHIP SYSTEMS COMMAND
OCEANOGRAPHIC RESEARCH SHIP
AGOR (UTILITY) CLASS

HALTER MARINE SERVICES, INC.
P.O. BOX 28246 NEW ORLEANS, LA. 70128
00043

SCALE: 3/8" = 1'-0"
DATE: 8/7/72
DRAWN BY: [Signature]
CHECKED BY: [Signature]

U.S. NAVAL SHIP SYSTEMS COMMAND
OCEANOGRAPHIC RESEARCH SHIP
AGOR (UTILITY) CLASS

HALTER MARINE SERVICES, INC.
P.O. BOX 28246 NEW ORLEANS, LA. 70128
00043

SCALE: 3/8" = 1'-0"
DATE: 8/7/72
DRAWN BY: [Signature]
CHECKED BY: [Signature]

U.S. NAVAL SHIP SYSTEMS COMMAND
OCEANOGRAPHIC RESEARCH SHIP
AGOR (UTILITY) CLASS

HALTER MARINE SERVICES, INC.
P.O. BOX 28246 NEW ORLEANS, LA. 70128
00043

SCALE: 3/8" = 1'-0"
DATE: 8/7/72
DRAWN BY: [Signature]
CHECKED BY: [Signature]

U.S. NAVAL SHIP SYSTEMS COMMAND
OCEANOGRAPHIC RESEARCH SHIP
AGOR (UTILITY) CLASS

HALTER MARINE SERVICES, INC.
P.O. BOX 28246 NEW ORLEANS, LA. 70128
00043

SCALE: 3/8" = 1'-0"
DATE: 8/7/72
DRAWN BY: [Signature]
CHECKED BY: [Signature]

U.S. NAVAL SHIP SYSTEMS COMMAND
OCEANOGRAPHIC RESEARCH SHIP
AGOR (UTILITY) CLASS

HALTER MARINE SERVICES, INC.
P.O. BOX 28246 NEW ORLEANS, LA. 70128
00043